



# EAST PARK ENERGY

**East Park Energy**

EN010141

## **Environmental Statement Volume 3 - Figures**

### **Chapter 3 Figures**

**Document Reference: EN010141/DR/6.3**

Infrastructure Planning (Applications: Prescribed Forms and  
Procedure) Regulations 2009: Regulation 5(2)(a)

**September 2025**

Version P01

# EAST PARK ENERGY

Planning Act 2008

Infrastructure Planning (Applications: Prescribed  
Forms and Procedure) Regulations 2009

## Environmental Statement Volume 3 – Figures

### Chapter 3 Figures

<b>APFP Regulation Reference:</b>	Regulation 5(2)(a)
<b>Planning Inspectorate Scheme Reference:</b>	EN010141
<b>Application Document Number:</b>	EN010141/DR/6.3
<b>Author:</b>	Axis PED Ltd

Version	Date	Status
P01	September 2025	DCO Submission

© AXIS P.E.D. Ltd 2025. All rights reserved.

This document and its accompanying documents contain information which is confidential and is intended only for the use of the client. If you are not one of the intended recipients any disclosure, copying, distribution or action taken in reliance on the contents of the information is strictly prohibited.

Unless expressly agreed, any reproduction of material from this document must be requested and authorised in writing from AXIS P.E.D. Ltd. Authorised reproduction of material must include all copyright and proprietary notices in the same form and manner as the original and must not be modified in any way. Acknowledgement of the source of the material must also be included in all references.

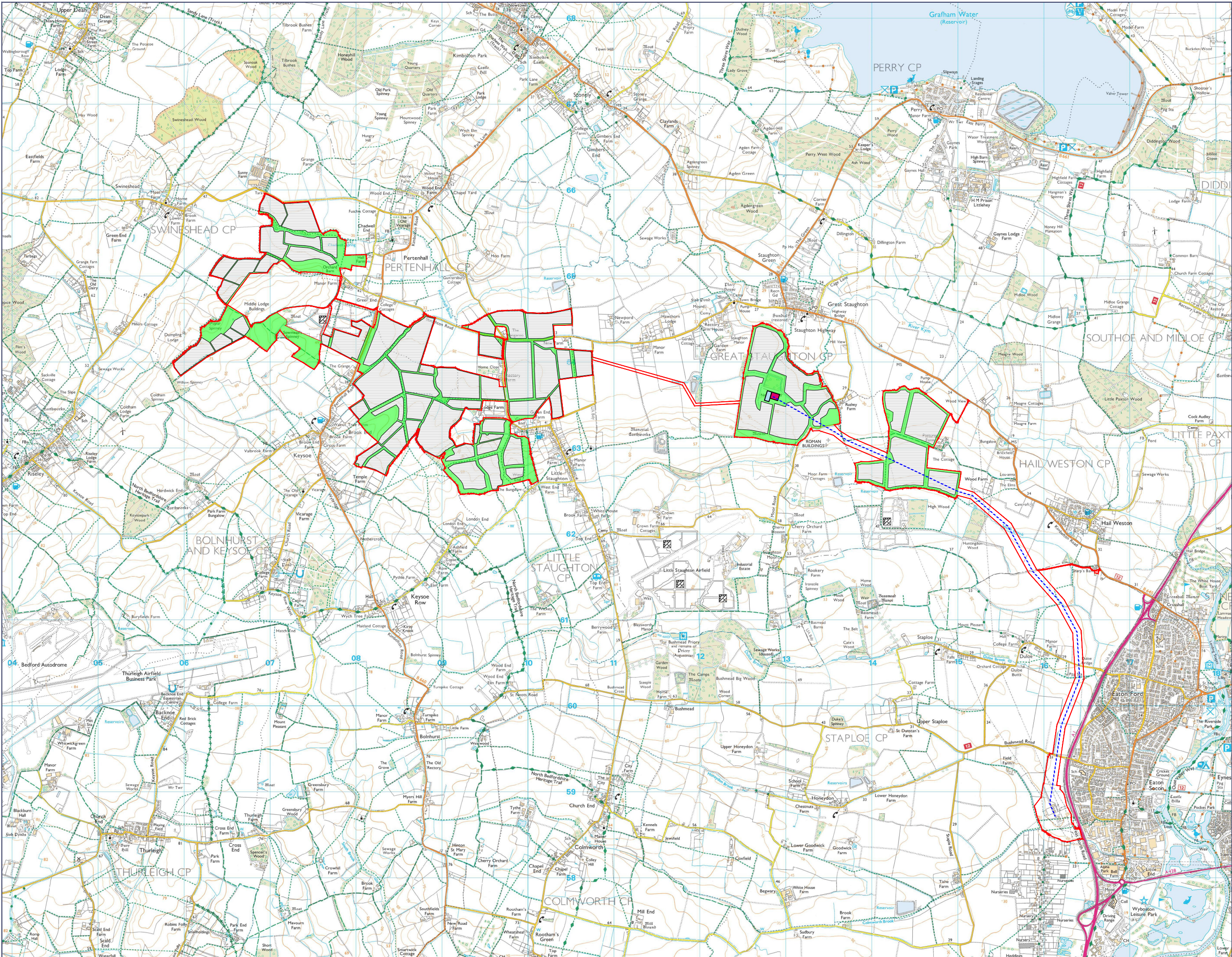
## ES Volume 3 – Chapter 3 Figures:

**Figure 3-1**            EIA Scoping Indicative Zoning Plan (Rev P01)

**Figure 3-2**            PEIR Indicative Zoning Plan (Rev P01)

**Figure 3-3**            ES Illustrative Zoning Plan (Rev P01)





Rev	Date	Comment
P01	30/09/2025	DCO Application

- EIA Scheme Boundary
- Indicative Solar and Associated Infrastructure
- Indicative Landscaping and Habitat Creation
- Indicative East Park Substation
- Indicative Battery Energy Storage Facility
- Indicative 400kV Grid Connection to Eaton Socon Substation



0344 8700 007  
axis.co.uk

Client  
**BSSL Cambsbed 1 Ltd**  
Project  
**East Park Energy**  
Drawing Title  
**EIA Scoping Indicative Zoning Plan**

Scale  
**1:40,000 @A3**  
APPF Reference  
**Regulation 5(2)(a)**

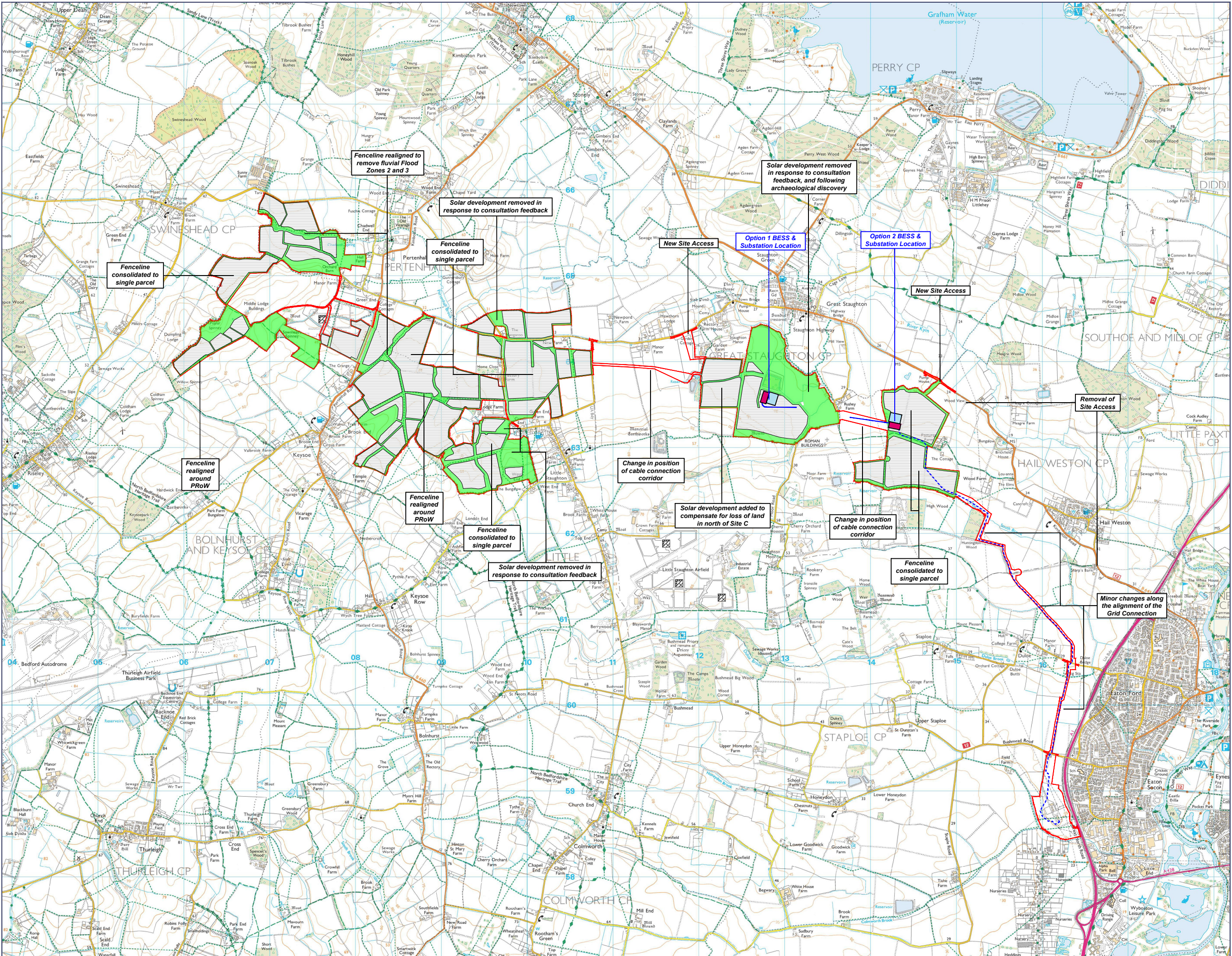
Status  
**DCO Application**  
Submission Reference  
**EN010141/DR/6.3**

Dwg no  
**Figure 3-1**  
Rev  
**P01**

This drawing is the copyright of AXIS P.E.D Limited and may not be loaned, copied or reproduced in any way - or used for any offer, quote, tender or construction purposes without written consent of the company to do so. Follow any figured dimensions - do not scale for construction purposes. If in doubt ask.

© Crown copyright and database rights  
2025 Ordnance Survey AC0000808122





Rev	Date	Comment
P01	30/09/2025	DCO Application

PEIR Scheme Boundary

Indicative Solar and Associated Infrastructure

Indicative Landscaping and Habitat Creation

Indicative East Park Substation

Indicative Battery Energy Storage Facility

Indicative 400kV Grid Connection to Eaton Socon Substation



0344 8700 007  
axis.co.uk



Client  
**BSSL Cambsbed 1 Ltd**

Project  
**East Park Energy**

Drawing Title

**PEIR Indicative Zoning Plan  
Scheme Evolution from EIA Scoping**

Scale  
**1:40,000 @ A3**

APPP Reference  
**Regulation 5(2)(a)**

Submission Reference  
**EN010141/DR/6.3**

Dwg no  
**Figure 3-2**

Status  
**DCO Application**

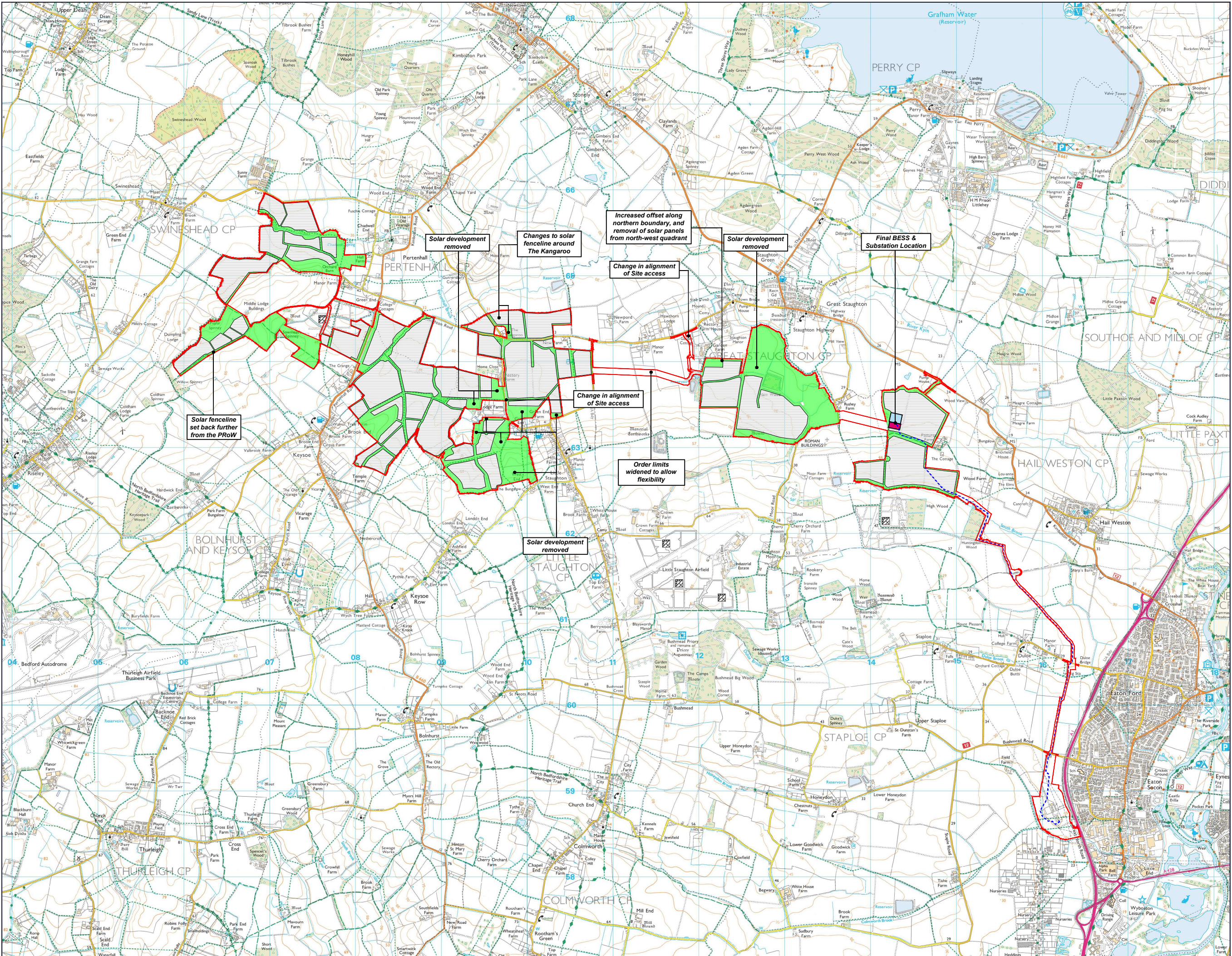
Rev  
**P01**

This drawing is the copyright of AXIS P.E.D Limited and may not be loaned, copied or reproduced in any way - or used for any offer, quote, tender or construction purposes without written consent of the company to do so. Follow any figured dimensions - do not scale for construction purposes. If in doubt ask.

© Crown copyright and database rights  
2025 Ordnance Survey AC0000808122







Rev	Date	Comment
P01	22/09/2025	DCO Application

- Order Limits
- Solar and Associated Infrastructure
- Landscaping and Habitat Creation
- East Park Substation
- Battery Energy Storage Facility
- 400kV Grid Connection to Eaton Socon Substation



0344 8700 007  
axis.co.uk



Client  
**BSSL Cambsed 1 Ltd**  
Project  
**East Park Energy**  
Drawing Title  
**Illustrative Zoning Plan  
Scheme Evolution from PEIR**

Scale  
**1:40,000 @ A3**  
APFP Reference  
**Regulation 5(2)(a)**

Status  
**DCO Application**  
Submission Reference  
**EN010141/DR/6.3**

This drawing is the copyright of AXIS P.E.D Limited and may not be loaned, copied or reproduced in any way - or used for any offer, quote, tender or construction purposes without written consent of the company to do so. Follow any figured dimensions - do not scale for construction purposes. If in doubt ask.

© Crown copyright and database rights  
2025 Ordnance Survey AC0000808122